



CITY OF SWIFT CURRENT

where life makes sense



Where Life Makes Sense

Fundamental approach makes Swift Current a municipal model

AT A GLANCE

WHO: City of Swift Current

WHAT:

100-year-old municipality – incorporated as a city in January 1914 – that was home to 15,503 as of the 2011 federal census

WHERE:

Southwest Saskatchewan, along the Trans-Canada Highway, 170 kilometers west of Moose Jaw and 218 kilometers east of Medicine Hat

WEBSITE:

www.SwiftCurrent.ca

The economic and lifestyle momentum that's been building in the Saskatchewan city of Swift Current has made it a go-to source of counsel for other areas – both larger and smaller – seeking to replicate the successes. In fact, a certain legislative body in Washington, D.C. might want to take a look, too.

"It starts with fundamentals," said Tim Marcus, the city's chief financial officer and deputy chief administrative officer. "We have the location, the interest from oil companies and the agriculture, and we build on those strengths. For the last number of years, the city council and the administration haven't just given lip service to providing an atmosphere for business to succeed, they've put incentives in place that indicate that we'll do whatever we can for businesses that expand here.

"When that environment exists, businesses expand. And when that occurs, it attracts investment."

Marty Salberg, the city's director of business development, said the progress is traceable to a community-wide sea change a decade ago.

"About 10 years ago, there was a grassroots shift in what people wanted. They wanted the population to grow and they wanted to attract businesses here," he said. We've been fortunate



Jerrod Schaefer
Mayor of Swift Current

that there's been a real change in the mentality of the population."

Resulting upgrades in infrastructure have included a new hospital, a water treatment plant and a waste-water facility, and the significant uptick in activity in the city's northeast section will ultimately yield two new elementary schools, about 60 new single-family residential lots available for purchase, plans for additional multifamily options and a new 15-acre industrial park.

Integral to the neighborhood improvements is an integrated facilities concept that falls in line with cost-sharing policies filtered down from the provincial and federal governments. As continuing facility investments are made, those facilities will be tied together to enable more overall functionality.

"By having the facilities tied in together and making them multi-use, we'll make it valuable for residents," Salberg said. "We'll have all this stuff together sort of like a campus, and large chunks of it are built or are being built as we speak. It makes a lot of sense."

And with that, it ties nicely into the city's motto: "Where life makes sense."

Swift Current is spending 2014 in celebration of the 100th anniversary since it was initially incorporated as a city. It was originally formed as a First Nations camp a century earlier and its name was originated



Installing multiple pieces of a nearly 20-ton bridge might sound like a remarkably onerous undertaking but it's all in a few days' work – literally – for Manitoba-based Minty's Moving Ltd. (MML).

A family business that began when founder Vic Minty moved a chicken coop for his uncle back in 1945, Minty's has experienced consistent growth and has gradually branched out to more complex moves including houses, sheds, barns and grain elevators. The company began hauling and erecting bridge girders for local general contractors about 20 years ago before ultimately developing the expertise that allowed it to take over general contracting duties for complete bridge jobs.

These days, MML builds about 20 highway bridges and 20 temporary detour bridges per year while also undertaking about 20 more repair jobs on highway bridges annually. It still takes on all sorts of large moving tasks – houses, sheds, grain elevators, bridges and hydro transformers and reactors – and has recently begun dabbling in the design, build, finance and maintenance of bridges.

MML was awarded a \$141,280 contract for the construction of the foundation and the erection of a steel truss pedestrian bridge on the 13th hole at the City of Swift Current's Chinook Golf Course, an addition that allows golfers to cross over an on-course creek rather than having to travel along the 12th fairway while walking around it.

The installation was the final portion of a \$331,000 capital project that also included the bridge's supply, fabrication and delivery. The two halves of the bridge – manufactured by Eagle Bridge Co. – were brought to the work site, at which time the Minty's crew

arrived to prepare the area for installation.

Upon arrival, Minty's performed a survey and marked pile locations before four screw piles were installed and cut-off elevations were determined and transferred to the piles. Pile cap plates and gussets were welded into place and after excavation, two back timber walls were installed. Backfilling and compaction of abutment material began while clay was placed around the outside of the abutment and compacted.

Upon reaching the desired shape, steel pile caps were fabricated on site and placed on top of the previously installed cap plates. Thirty wooden swamp mats, measuring eight feet by 14 feet, were placed to provide a firm base for the crane, at which time the two halves of the bridge were bolted together and hoisted into position. The pile caps were then positioned and welded down, the retaining plates and hardware were installed and the crane was cut loose from the bridge.

Construction of the ramps was completed on either side of the bridge and landscaping was also finalized while the remainder of necessary welding was done and the Minty's crew left the site upon final inspection and approval from golf course superintendent Doug Leavins and consulting firm engineers Trevor Fetich and Brian Bollingbroke.

"No project gets done successfully without teamwork and we were able to have success thanks to the others involved on the project," says Bill Hopkins, site supervisor for Minty's. "They were absolute gems to work with and we thank them very much for the cooperation they provided."



from a Cree Indian word describing the rapid flow of the nearby South Saskatchewan River.

A settlement was established during the westward railroad expansion in the 1880s and it became a village in 1904 and a town three years later before incorporation with Frank West as the first mayor.

These days, the incumbent isn't shy about singing the praises, regardless of the year.

"Swift Current is a welcoming and vibrant community with many qualities that make it a great place to live, work, retire and raise a family," said Jerrod Schafer, who's served since 2009 after two terms as a council member. "Its continued development and growth offers many exciting work and business opportunities. We believe we have a lot to celebrate for a lot of reasons, not just because of the anniversary. We're very, very proud of what we have."

Swift Current's population grew 3.7 percent in a recent five-year stretch, and the locals are poised for more.



Fun, Food & Entertainment

7 7 7

Follow us on:

1401 N Service Rd E - Swift Current, SK
306.778.5759
www.LivingSkyCasino.ca
Play Responsibly

Live it up.





www.mintysmoving.ca
www.canadabridge.ca
(204) 848-2552



*Our company stands up to close inspection...
...do your bridges?*



Minty's Moving Ltd. would like to thank all the partners that helped in the completion of the Chinook Golf Course pedestrian bridge.







BTO Contracting Ltd. is a leader in providing value-added construction services in Western Canada. We use our knowledge and experience to ensure a quality product is completed efficiently, economically, and environmentally safe.

BTO values the safety of its clients and employees. We have developed and implemented an Occupational Health and Safety Program that exceeds the requirements of Alberta Construction Safety Association and has a Certificate of Recognition (COR) with them, BTO is also a member Comply Works.

With over 20 years of experience, BTO Contracting Ltd. has extensive knowledge in the earthmoving industry.

- ➔ Landfill Construction including all related earthwork, the installation of all HDPE, GCL, Geocomposite and leachate collection system.
- ➔ Landfill capping
- ➔ Landfill gas well and piping installation
- ➔ Highway and County road construction
- ➔ Environmental Remediation
- ➔ Rail Grade construction including sub-ballast installation
- ➔ Land and right-of-way clearing
- ➔ Subdivision construction – Residential and Commercial
- ➔ Lease pad and road construction



Head Office: 11420 142 Street, Edmonton, T5M 1V1
 Lacombe Office: 5608 Len Thompson Drive, Lacombe Alberta
 Phone: (587)523-3939 | info@btocontracting.com
www.btocontracting.com

“It truly is a great city to live in and it hasn’t happened by chance,” Schafer said. “There’s been a lot of good planning, and, as a result, we’re going to continue to see some good growth.”

It will be the result of a perfect storm of factors that make Swift Current attractive – including a desirable location within both the province and the region on the Trans-Canada Highway, and an economy fueled by a cross-section of industries.

Among the sectors driving the bottom line is a mainstay like agriculture, but the city has also benefitted from increased oil activity in the region, tourism that’s soared since the arrival of the Living Sky Casino and an industrial footprint led by the local home bases of Batco Manufacturing and Rem Enterprises.

And once the businesses were built and the jobs came, the people’s needs were taken care of, too.

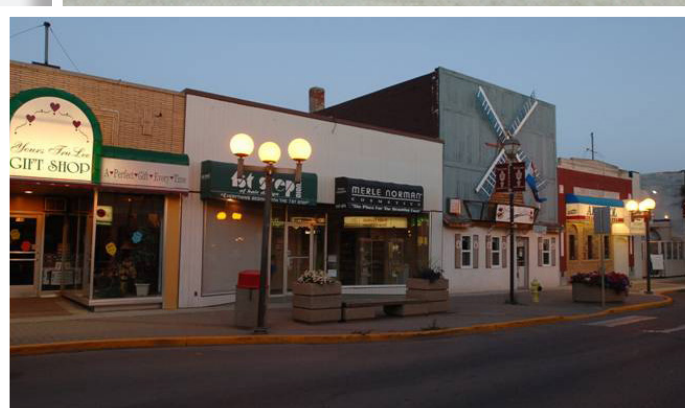
“We have a strong and diverse economy and very good people,” Salberg said. “It’s been very important that our mayor and council have been responsible in investing in the things that people have wanted. Businesses need employees, but the employees need other things. We’re probably well ahead of the curve on those things.

“Not only is the economy where it needs to be, but I think we’ve done a wonderful job on the infrastructure that the people and the businesses require.”

Batco, which employs more than 70 people, acquired a vacant 114,000 square-foot manufacturing space in the city last January with designs on increasing its standing as the largest maker of belt conveyors for grain-handling products in North America. Elsewhere in the city is the Semiarid Prairie Agricultural Research Centre, which provides support to area farmers and ranchers on the region’s cereal crops with its globally recognized staff of experts, alongside ongoing research on new varieties of peas and lentils.

The availability of such expertise helped fuel a record-breaking 2013 growing season, Salberg said, which translates into additional sales of related farm





equipment. And several energy companies have made investments in the critical infrastructure that signals increase exploratory activity in the area – particularly north, west and south of the city limits.

“This year produced the highest yielded that most farmers had ever seen in this area – particularly in cereal crops, as well as peas and lentils and granolas,” he said. “It’s meant good things for a lot of people, and when you combine it with the oil industry interest increasing, things look promising here.”



BTO Contracting Ltd. is an Edmonton, Alberta-based general contracting company founded in 2002 by Ivan Katerenchuk. In the years since its creation, the operation, which has a satellite Alberta office in Lacombe, has expanded to a substantial fleet of equipment, developed a knowledgeable staff and cultivated great working relationships with their clients.

The company prides itself on its expertise over a wide range of project types, ranging from landfill methane gas well installation to road construction to subdivision grading. Among its other capabilities are landfill construction – including all related earthwork and installation of HDPE, GCL, geocomposite and leachate collection systems – landfill capping, environmental remediation, rail grade construction, land and right-of-way clearing.

Additionally, BTO is safety certified with the Alberta Construction Safety Association and Comply Works.

“BTO Contracting Ltd. is dedicated to serving our employees and clients in a safe manner,” Katerenchuk says. “We will use our knowledge and experience to ensure a quality product is completed safely, efficiently, economically and environmentally safe. Our goal is to create a successful partnership with our clients throughout the construction process. Our pledge is to establish lasting relationships by exceeding their expectations and gaining their trust through exceptional performance and knowledge by every member of the construction team.”



www.btocontracting.com



City of Swift Current

177 1st Ave NE
Swift Current, Sask
S9H 2B1

Mailing Address:

PO Box 340
Swift Current, Sask
S9H 3W1

Contact:

Phone: 306-778-2777
E-mail: admin@swiftcurrent.ca

Business View Publishing. Inc.

12689 New Brittany Blvd.
3W
Fort Myers. FL 33907

Contact

Phone: 239-220-5554
Fax: 239-288-2494
info@businessviewmagazine.com

Executives

Publisher: Marcus VandenBrink
VP Editorial: Lyle Fitzsimmons
VP: Production: Aimy McGrew